



Figure 1
Lay out extrusion lengths and cast corners.



Figure 2
Position all pieces for fastening.

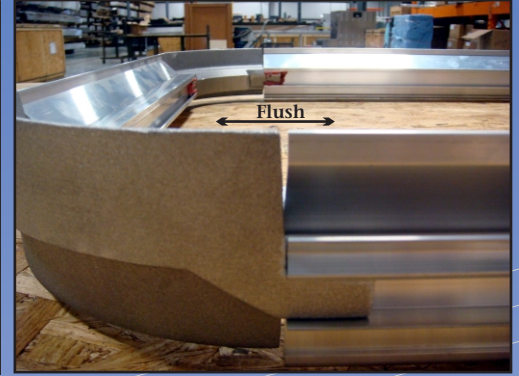


Figure 3
Before fastening, make sure the extrusion and cast edges are perfectly flush with one another.

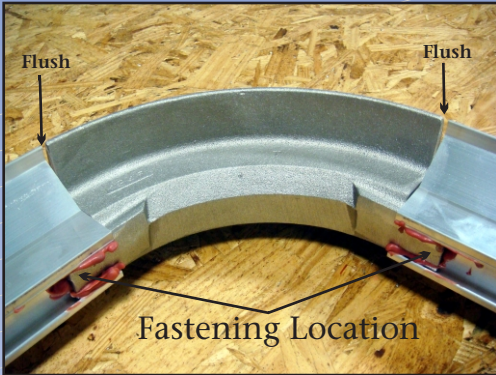


Figure 4
Once they are flush and secure, fasten using your choice of welding, mechanical fastening or adhesive bonding. NOTE: Welding is recommended.

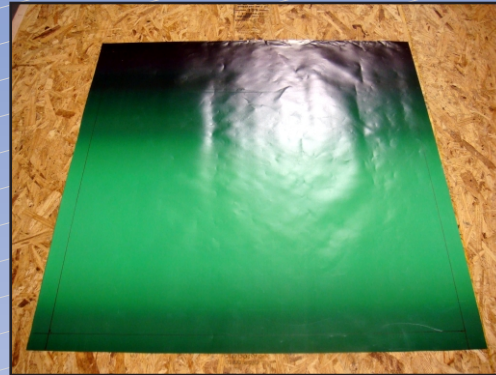


Figure 5
Measure, cut and place the Tension Clip placement line on your fabric material.



Figure 6
Using our guidelines, attach the Tension Clips and center over your frame.

NOTE: Guidelines listed on page 15 of the 2008 Commercial 2nd Ed. Catalog.

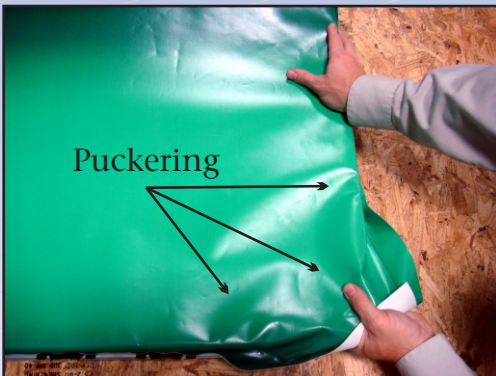


Figure 7
Push all Tension Clips into the extrusion by hand no more than one click. The fabric may start to pucker after doing this.



Figure 8
Before tensioning with the Tension Tool, push and pull the material to eliminate some of the pucker.



Figure 9
Using the Tension Tool, start working around the frame pushing the Tension Clips in one click at a time. You may find it helpful to continue to push and pull the fabric in certain areas.



Figure 10
Once the straight areas of fabric are tensioned flat, do not continue to push the clips in farther. The corners may still have puckering.

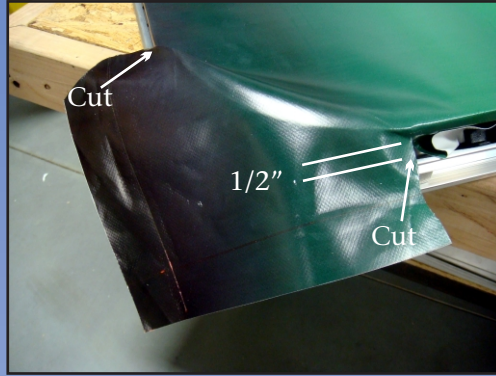


Figure 11
Cut relief areas in the fabric where the cast Radius Corners begin. Do not cut closer than 1/2" to the frame.

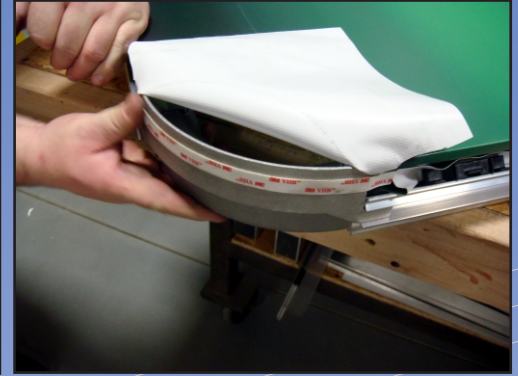


Figure 12
Fold the fabric back and apply VHB foam tape 1/2" down from the top of the frame. The tape will temporarily hold the fabric in position until the security screws are added.



Figure 13
Work the flexible fabric to eliminate puckering or wrinkles while pushing it onto the tape.

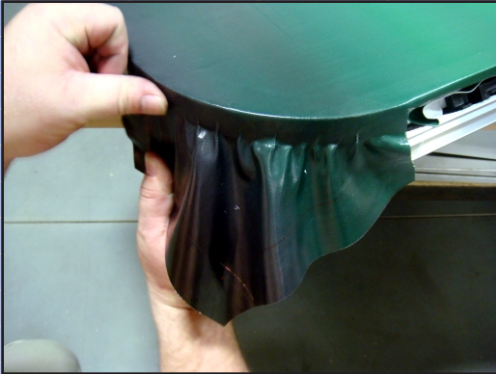


Figure 14
Continue this process until desired look is achieved.



Figure 15
Cut excess fabric off by following the groove underneath the fabric on the cast Radius Corner where it recesses to a lower level. Pre-drill holes for security screws just below where the tape is located.

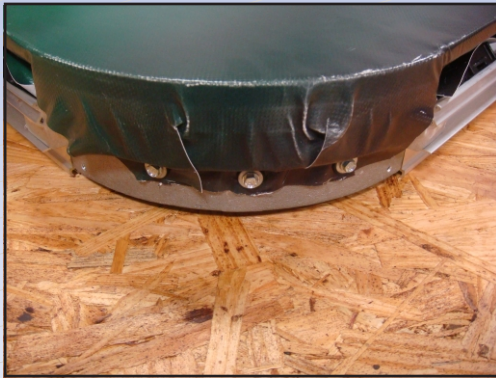


Figure 16
Attach the supplied screws in the area's where the fabric is not doubled up to insure they sit flat and do not obstruct the cover.

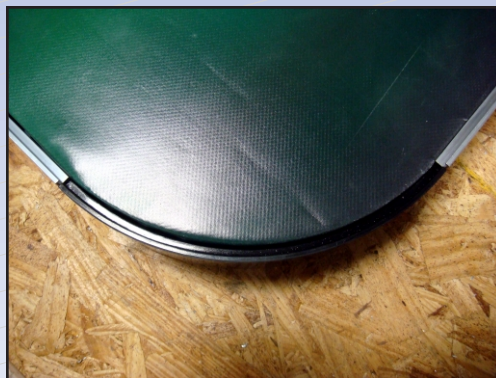


Figure 17
Attach the Radius Cover with the adjoining straight cover.

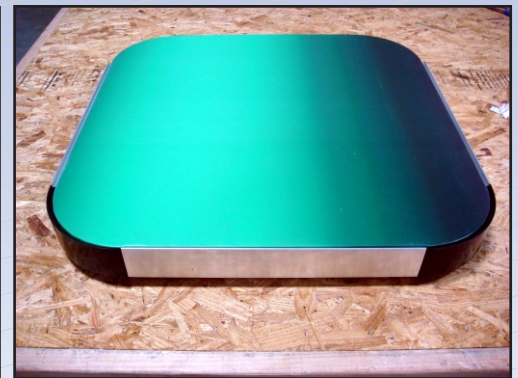


Figure 18
Attach all Covers to complete.